

COMBINATION WHEEL ASSEMBLY

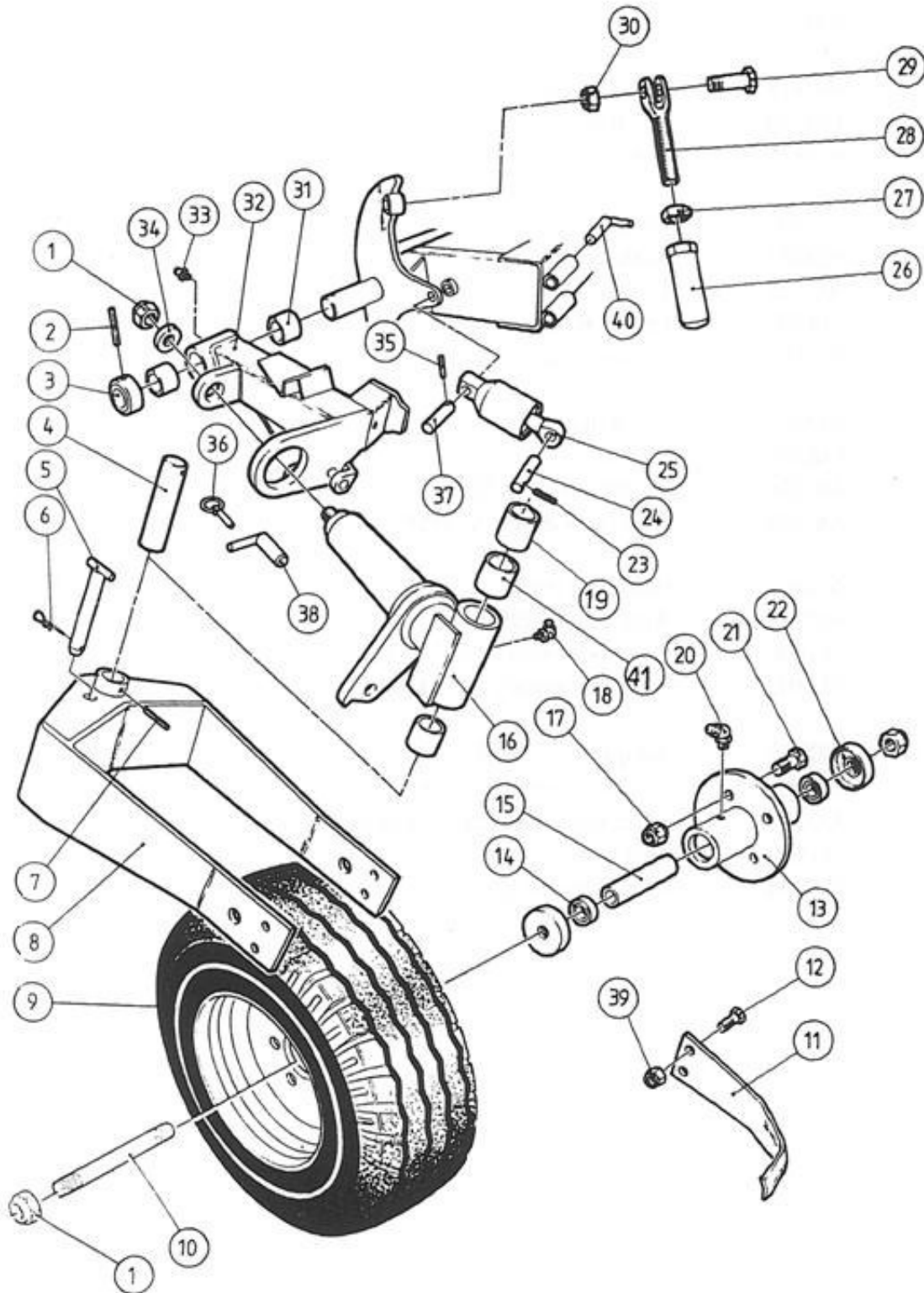


PLATE N^o
DP7DP-07
1096

COMBINATION WHEEL ASSEMBLY

ITEM	PART N°	DESCRIPTION	QTY
1	900112	Self Locking Nut 1" UNF	3
2	900548	Spring Pin Dia 10 x 70	1
3	199200	Collar	1
4	198900	Yoke Pin	1
5	199400	Pin	1
6	900521	Rclip	1
7	900542	Spring Pin Dia 10 x 60	1
8	197800	Wheel Yoke	1
9	198700	Wheel Assembly	1
-	900594	Wheel Rim	1
10	027100	Axle Shaft	1
11	1127100	Wheel Scraper	1
12	900035	Bolt ½" UNF 1 ¾"	2
13	197400	Hub	1
14	900322	Bearing	2
15	027200	Spacer Tube	1
16	197700	Pivot Tube	1
17	900493	Wheel Nut	4
18	900434	Grease Nipple 90 Degrees	1
19	900348	Plain Bearing	2
20	900433	Grease Nipple 45 Degrees	1
21	900047	Bolt 5/8" UNF x 2"	4
22	199900	Dust Cap	2
23	900292	Spring Pin Dia 5/16" x 2	1
24	199000	Pin	1
25	198300	Damper Assembly	1
26	265900	Depth Stop Tube Medium	2
-	199500	Depth Stop Tube Short	2
27	900894	Lock Nut 1" UNF	2
28	199700	Depth Stop Screw	2
29	900869	Bolt 5/8" UNC x 3	2
30	900120	Self Locking Nut 5/8" UNC	2
31	900350	Plain Bearing	2
32	307400	Wheel Arm	1
33	900431	Grease Nipple	1
34	900174	Washer	1
35	900551	Spring Pin Dia 8 x 40	1
36	900526	Linch Pin	2
37	199100	Pin	1
38	199300	Locking Pin	1
39	900118	Self Locking Nut ½" UNF	2
40	307500	Transport Pin	1
41	1167400	Spacer	1