

**Parts**  
**Manual**  
**100 Series**  
**MA**

## **Important Information**

### **Serial Number**

It is important to make a note of the serial number and year of manufacture of your machine in the spaces provided below. This information should always be quoted in any correspondence with Dowdeswell Engineering.

When ordering spares for your machine, you should always quote the serial number and year of manufacture either to Dowdeswell's or to your dealer.

Machine Serial Number: \_\_\_\_\_

Year of manufacture: \_\_\_\_\_

### **Warranty**

Should defective material or workmanship used in the manufacture give rise to failure, the products, components or sub-assemblies affected, will be replaced free of charge during the period of warranty offered with the machine at the time of purchase. The fitting of non Dowdeswell parts, or repairs, or modifications carried out by unauthorised persons will invalidate the warranty. No work will be carried out without prior consultation with Dowdeswell Engineering Co. Ltd.

Save to the extent covered by the warranty, the company shall not be liable in any circumstances for any loss, injury or expense, whether direct or indirect, which may arise for any reason whatsoever from any defect in or otherwise in connection with any goods supplied or work done by the company.

### **Replacement Parts**

Use only genuine Dowdeswell spares as these replacement parts are designed for your machine to give the best possible performance and also have the full backing of the warranty cover. See the Parts Manual for the part number and description, when ordering spares always quote the machine serial number.

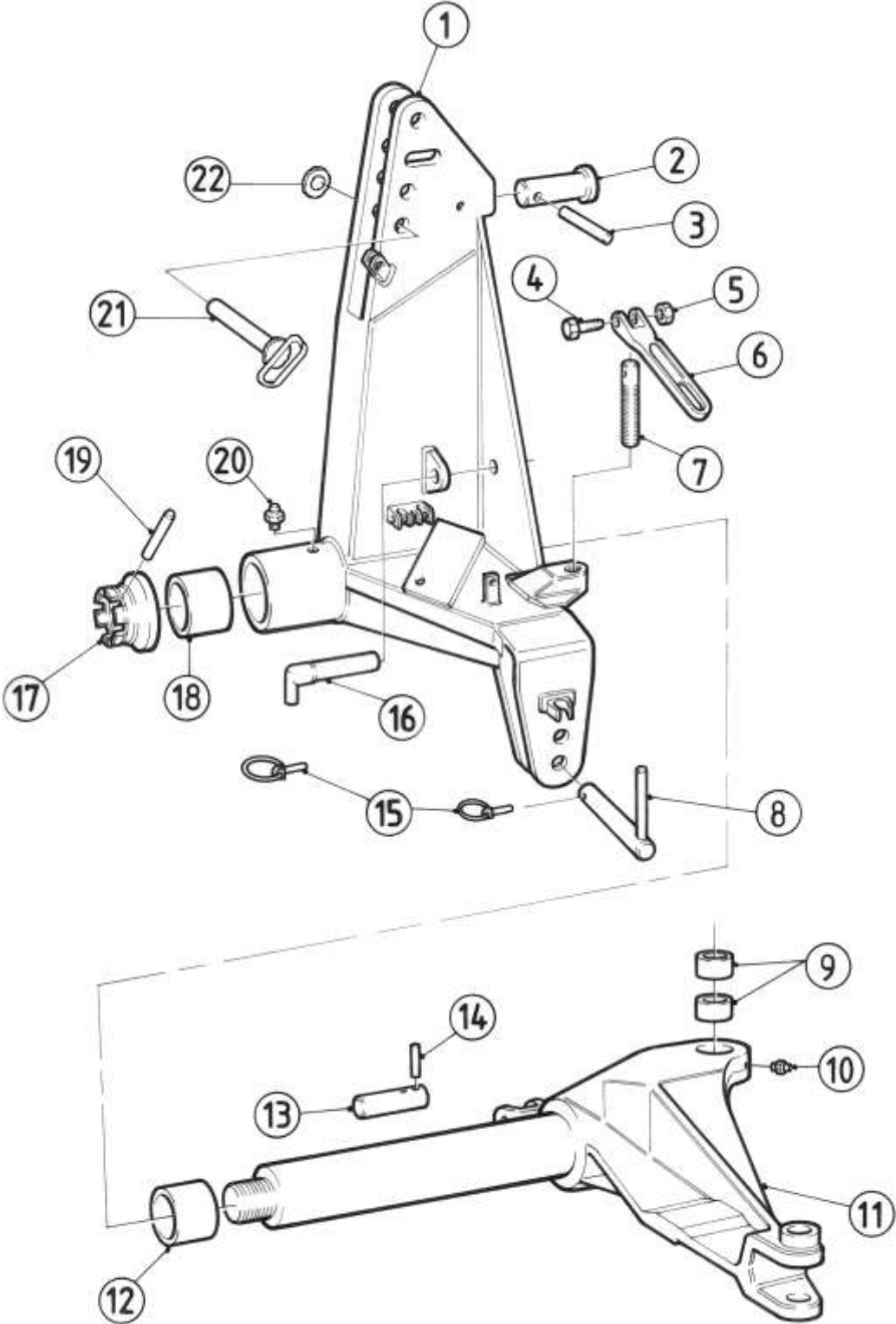
### **Definitions**

Throughout this manual the terms "Front", "Rear", "Left-hand (LH)" and "Right-hand (RH)" will be used and are derived from the tractor drivers normal position facing forward with the plough in its transport position.

The left-hand components are those which move the soil to the left, and the right-hand components are those which move the soil to the right.



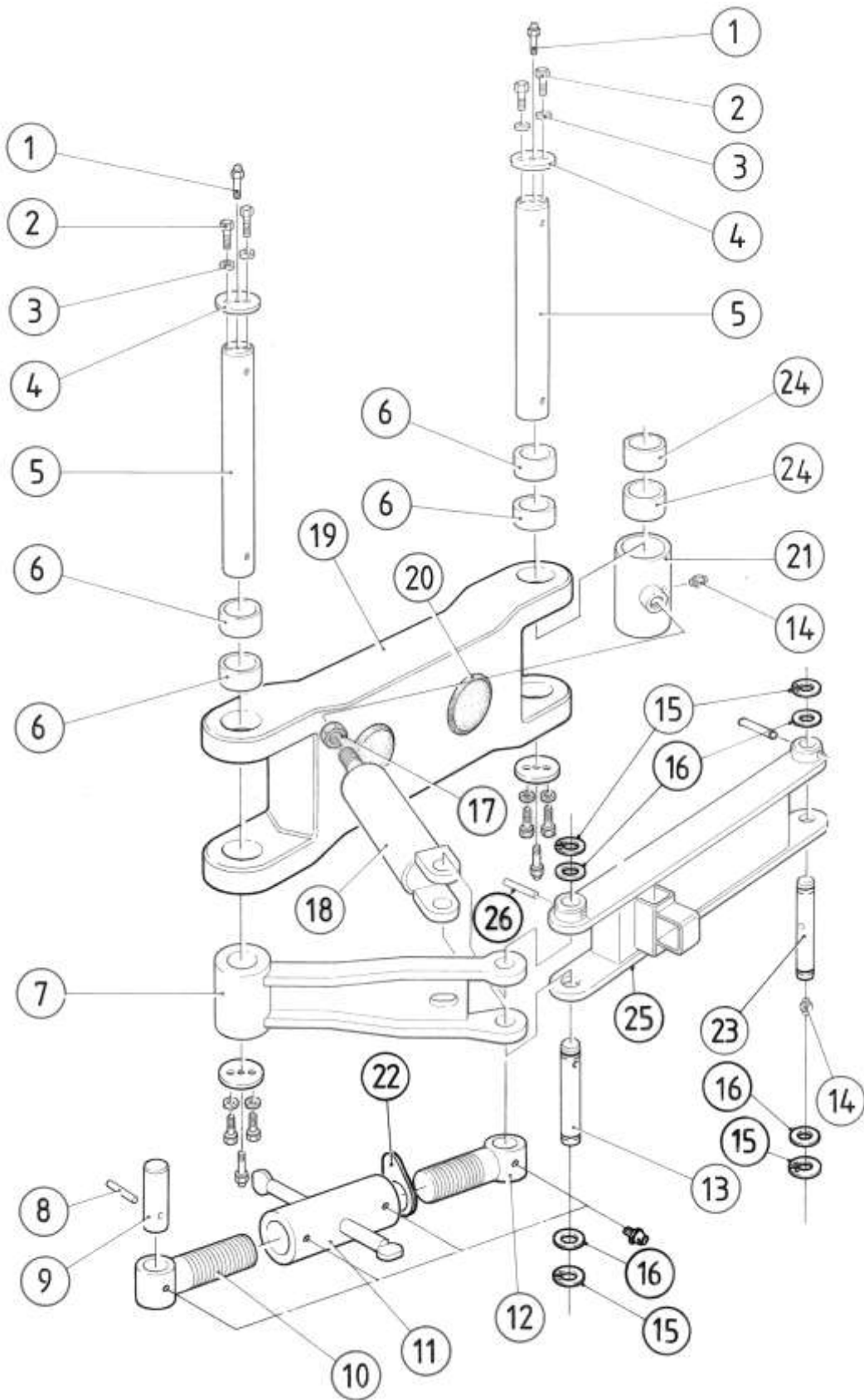
# **HEADSTOCK ASSEMBLY**



# **HEADSTOCK ASSEMBLY**

ITEM	PART N°	DESCRIPTION	QTY
1	1100800	Headstock	1
2	161900	Top Ram Pin	1
3	900542	Spring Pin	1
4	900027	Bolt 3/8" UNF x 2 1/2 "	2
5	900115	Self Locking Nut 3/8" UNF	2
6	1156300	Handle	2
7	1027100	Stud	2
8	1105400	Bottom Link Pin	2
9	900383	Internal Tension Bush	2
10	900431	Grease Nipple	1
11	1065600	Turnover Arm	1
12	900353	Plain Bearing	1
13	1073000	Lower Ram Pin	1
14	900559	Spring Pin	1
15	900527	Linch Pin	3
16	161600	Transport Pin	2
17	1070000	Pulling Nut	1
18	900353	Plain Bearing	1
19	900290	Spring Pin	1
20	900431	Grease Nipple	1
21	1496800	Top Link Pin	1
22	900184	Plain Washer	1

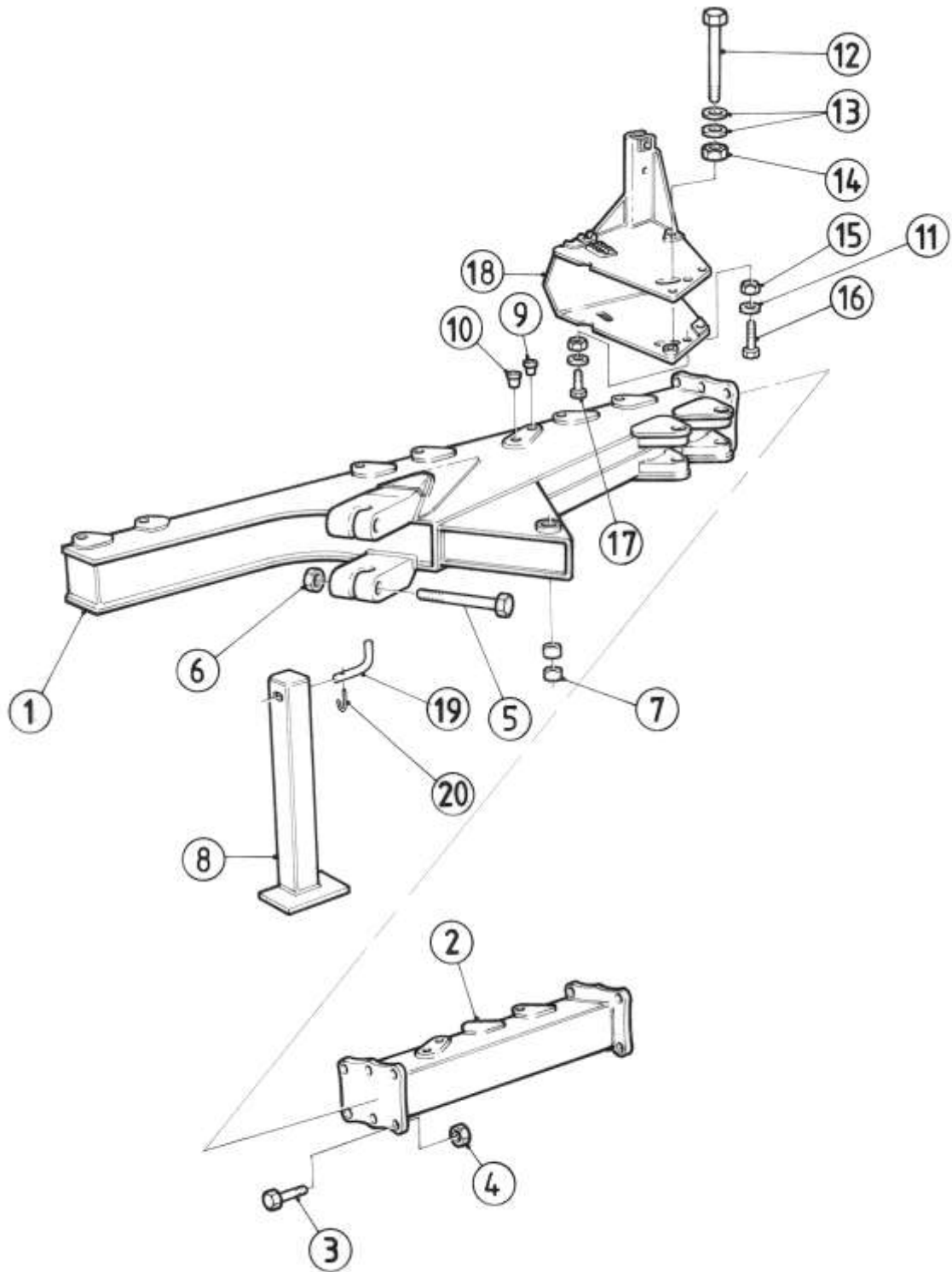
# **PARALLEL LINK ASSEMBLY**



# **PARALLEL LINK ASSEMBLY**

ITEM	PART N°	DESCRIPTION	QTY
1	900439	Grease Nipple	4
2	901308	Setscrew M12 x 30	8
3	901189	Spring Washer M12	8
4	1077100	Special Washer	4
5	1065500	Pin	2
6	900382	Internal Tension Bush	4
7	1064900	Cross Link	1
8	900559	Spring Pin	1
9	1065300	Pin	1
10	1065700	Adjuster Screw (LH)	1
11	1065900	Turnbuckle	1
12	1065800	Adjuster Screw (RH)	1
13	1318200	Pin	1
14	900431	Grease Nipple	6
15	900609	Circlip	4
16	900793	Special Washer	4
17	900776	Plain Nut M24	1
18		Offset Ram – See Separate Page	
19	1064700	Main Lift Arm	1
20	1163700	Rubber Bung	2
21	1068300	Piston Extension	1
22	1125000	Lock Nut	1
23	1318200	Pin	1
24	900360	Internal Tension Bush	2
25	1064800	Parallel Link	1
26	900559	Spring Pin	2

# **MAIN BEAM ASSEMBLY**

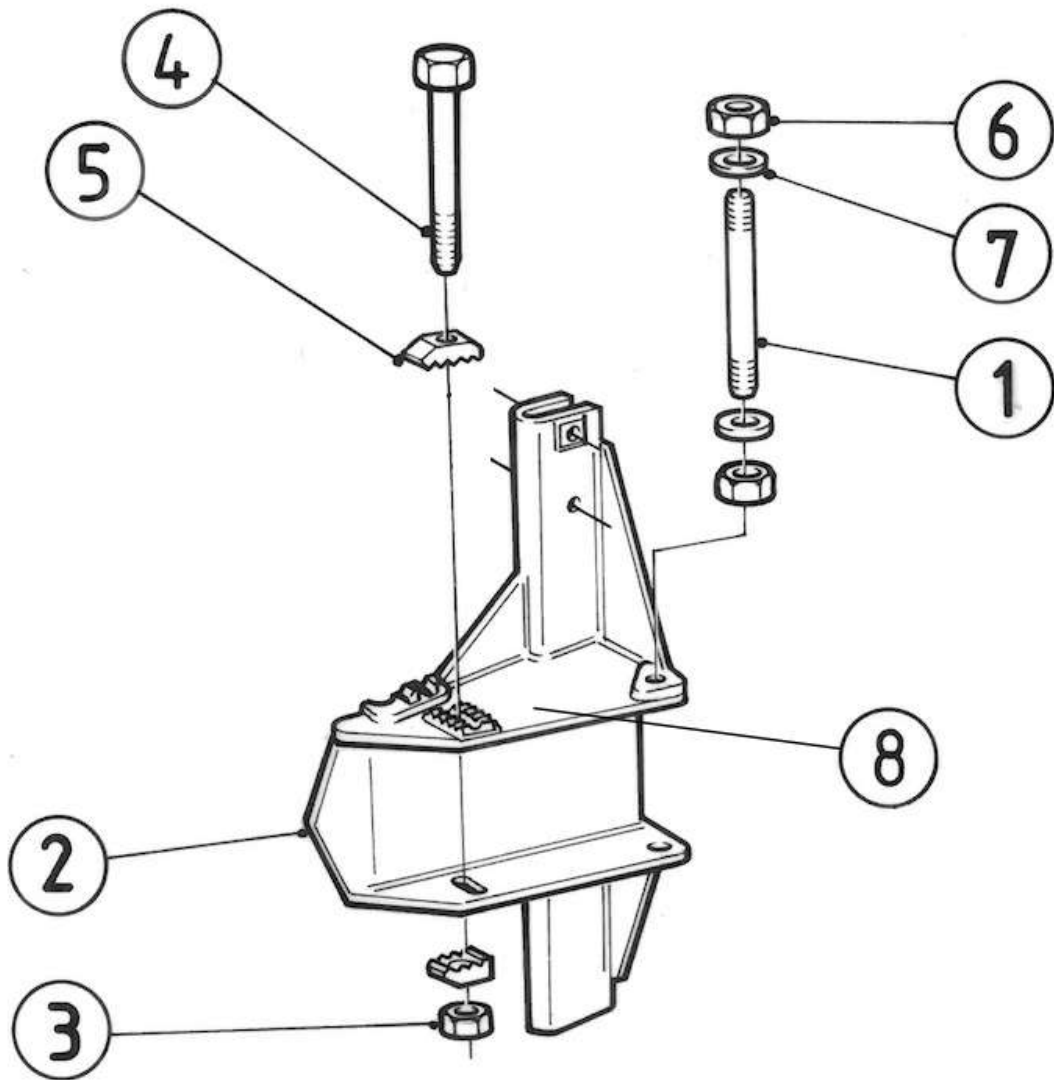




# **MAIN BEAM ASSEMBLY**

ITEM	PART N°	DESCRIPTION	QTY
1	1104000	Main Beam 3F 36" MA	-
	1523700	Main Beam 4F 36" MA	-
2	1104100	Extension Beam 36" MA	-
3	900043	Bolt 5/8" UNF x 2 1/2"	6
4	900116	Self Locking Nut 5/8" UNF	6
5	902772	Bolt M24 x 120	2
6	903276	Self Locking Nut M24	2
7	900347	Plain Bearing	2
8	091100	Parking Stand (Medium)	1
-	250800	Parking Stand (Short)	-
9	902263	Plastic Plug	2
10	902261	Plastic Plug	2
11	901613	M12 Plain Washer (3F Only)	6
12	901121	Bolt M20 x 200 (3F Only)	1
13	901619	Special Washer (3F Only)	2
14	900785	Self Locking Nut M20 (3F Only)	1
15	900783	Self Locking Nut M12 (3F Only)	6
16	901309	Setscrew M12 x 35 (3F Only)	4
17	901308	Setscrew M12 x 30 (3F Only)	2
18	1139700	Leg/Wheel Bracket (3F Only)	1
19	012500	Retaining Peg	1
20	900521	'R' Clip	1

# **MA LEG BRACKET ASSEMBLY**

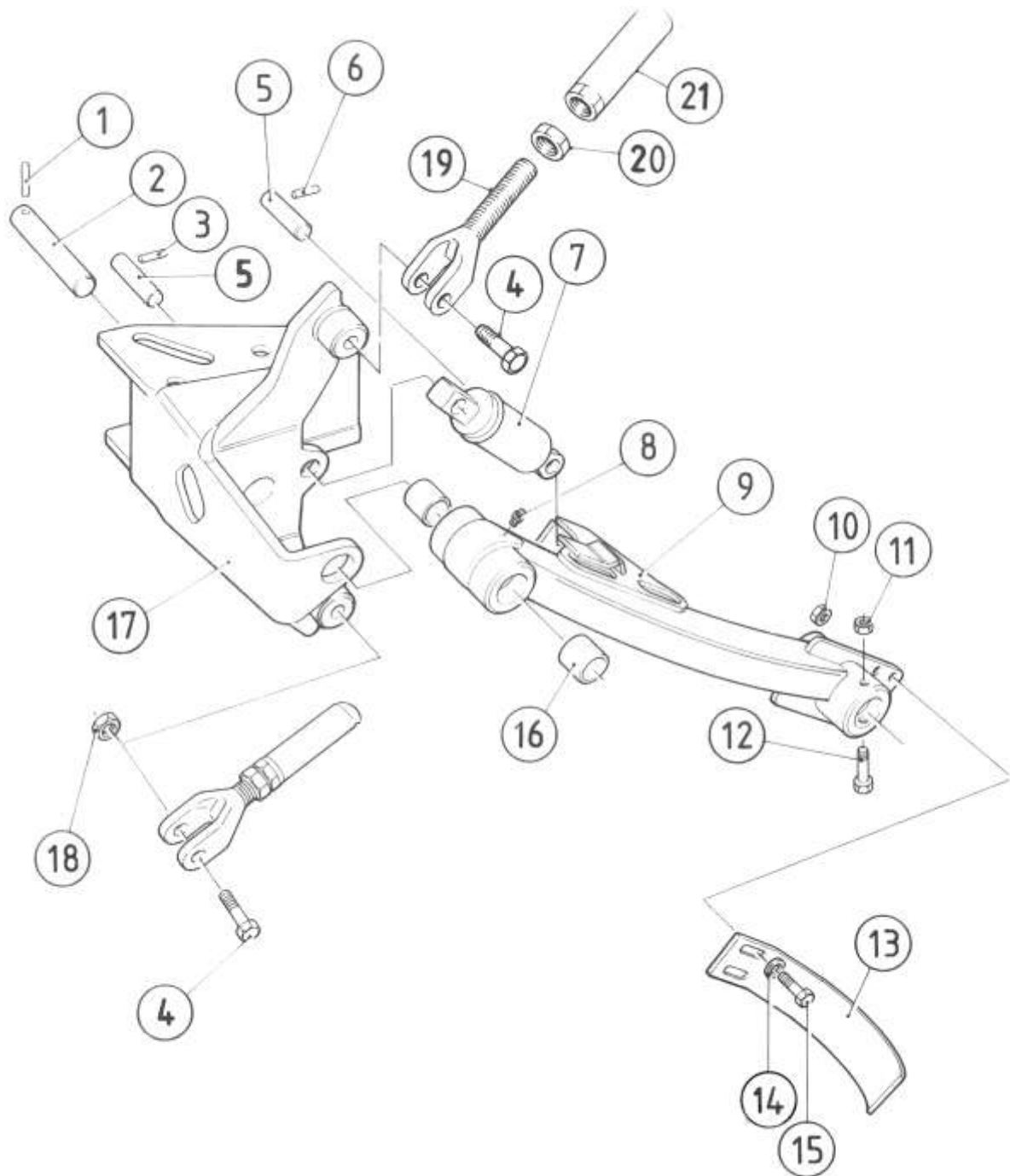


# **MA LEG BRACKET ASSEMBLY**

ITEM	PART N°	DESCRIPTION	QTY
1	1069600	Stud M24	1
2	1139400	Leg Bracket	1
3	900785	Self Locking Nut M20	1
4	902251	Special Bolt M20 x 225	1
5	1022700	Serrated Washer	2
6	900786	Self Locking Nut M24	2
7	901610	Plain Washer M24	2
8	1120400	Furrow Width Decal 12-18	1

Quantities Are Per Furrow

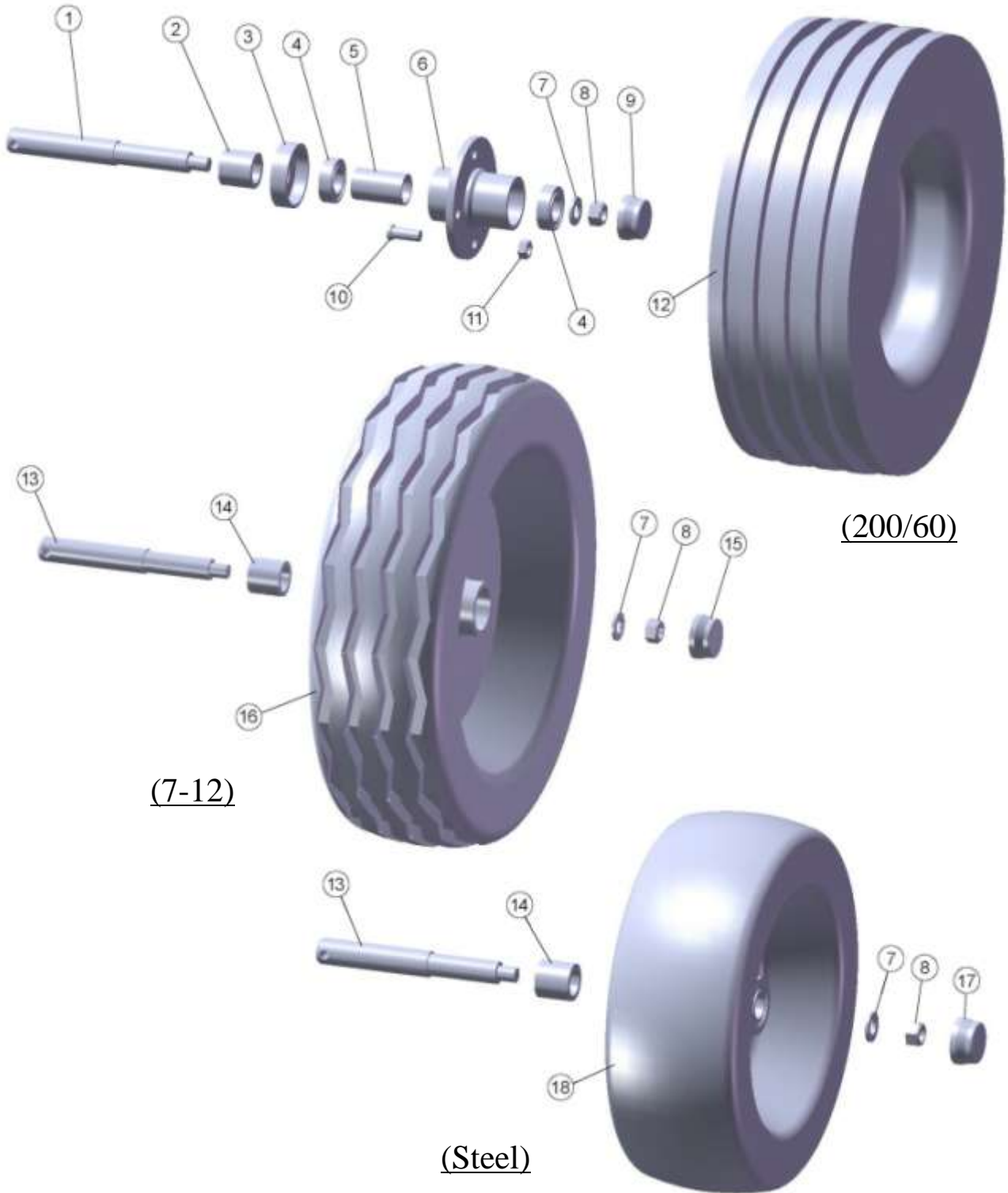
# **DEPTH WHEEL ASSEMBLY**



# **DEPTH WHEEL ASSEMBLY**

ITEM	PART N°	DESCRIPTION	QTY
1	900542	Spring Pin 10 x 60	1
2	1229700	Pivot Pin	1
3	900293	Spring Pin 5/16" x 2.5"	1
4	900869	Bolt 5/8" UNC x 3"	2
5	1247200	Damper Pin	2
6	900551	Spring Pin 8 x 40	1
7	-	Wheel Damper (See Separate Page)	-
8	900431	Grease Nipple	1
9	1221600	Wheel Arm	1
10	900783	Self Locking Nut M12	2
11	900783	Self Locking Nut M12	1
12	901074	Bolt M12 x 80	1
13	1151900	Wheel Scraper (Pneumatic Tyre)	1
-	1340800	Wheel Scraper (Steel Wheel)	-
14	901613	Washer M12	2
15	901066	Bolt M12 x 40	2
16	900348	Plain Bearing	2
17	1520100	Wheel Bracket (4F Only)	1
-	1224500	Wheel Bracket (3F Only)	-
18	900120	Self Locking Nut 5/8" UNC	2
19	199700	Depth Stop Screw	2
20	900894	Half Nut 1" UNF	2
21	265900	Depth Stop Tube	2

# WHEEL OPTIONS



(200/60)

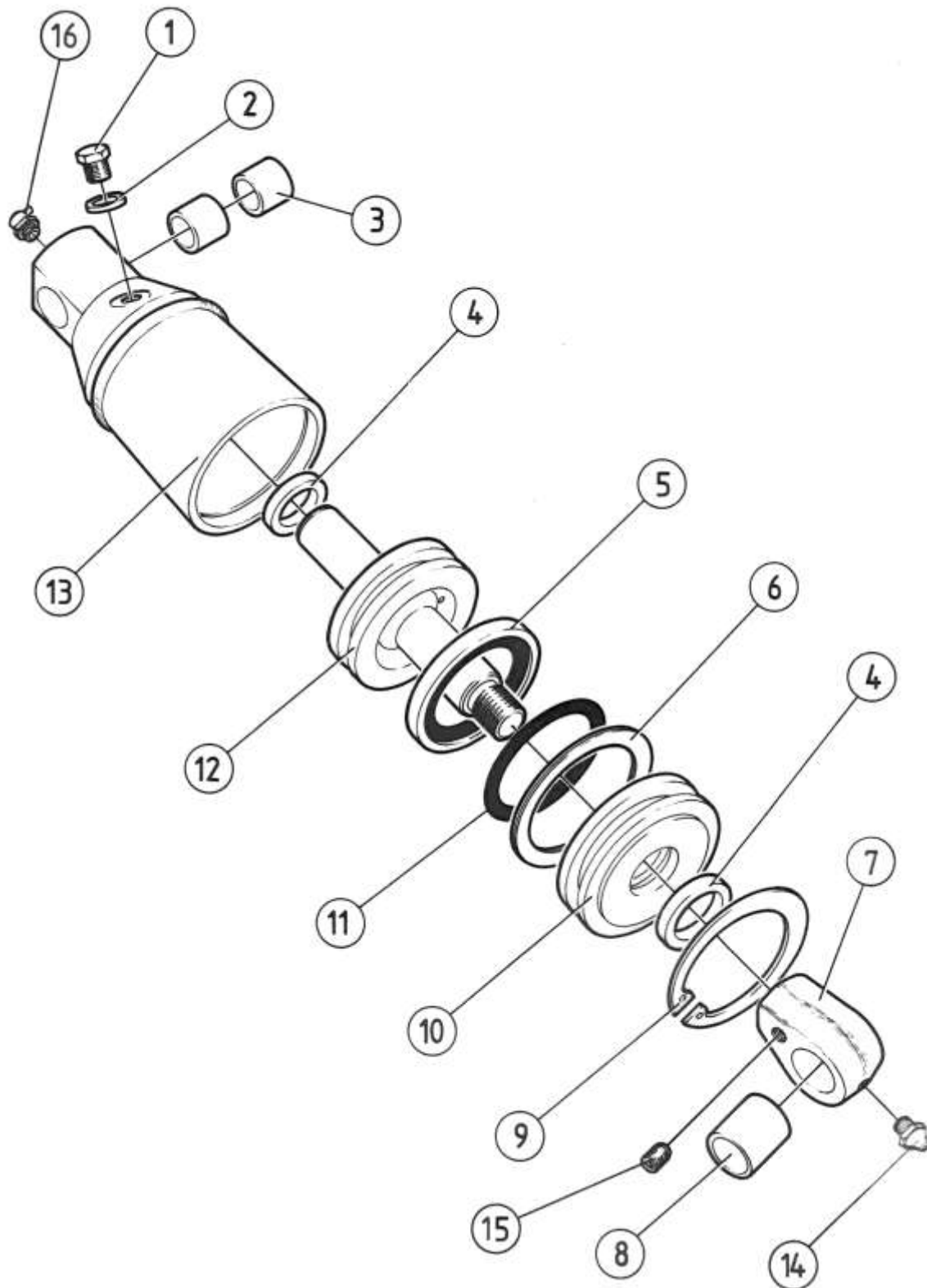
(7-12)

(Steel)

# **WHEEL OPTIONS**

ITEM	PART N°	DESCRIPTION	QTY
1	1211200	Wheel Axle (200/60)	1
2	1274000	Axle Spacer (200/60)	1
3	1211400	Dust Cover (200/60)	1
4	1375700	Bearing	2
5	1375900	Bearing Spacer	1
6	1375800	Wheel Hub	1
7	901607	Plain Washer M20	1
8	900785	Self Locking Nut M20	1
9	1375600	Hub Cap	1
10	900042	Wheel Stud	4
11	900493	Wheel Nut	4
12	1142700	Wheel Assembly (200/60)	1
-	901734	Tyre	-
-	900598	Wheel Rim	-
-	901748	Inner Tube	-
13	1211300	Wheel Axle (7-12 & Steel)	1
14	1211500	Axle Spacer (7-12 & Steel)	1
15	1219200	Hub Cap (7-12)	1
16	1497800	Wheel Assembly (7-12)	1
-	901735	Tyre 7-12	-
-	900600	Wheel Rim (c/w Bearings & Cap)	-
-	1071200	Bearing Kit	-
17	1071900	Hub Cap (Steel)	1
18	900832	Wheel Assembly (Steel)	1
-	1071200	Bearing Kit (Steel)	-

# **WHEEL DAMPER ASSEMBLY**

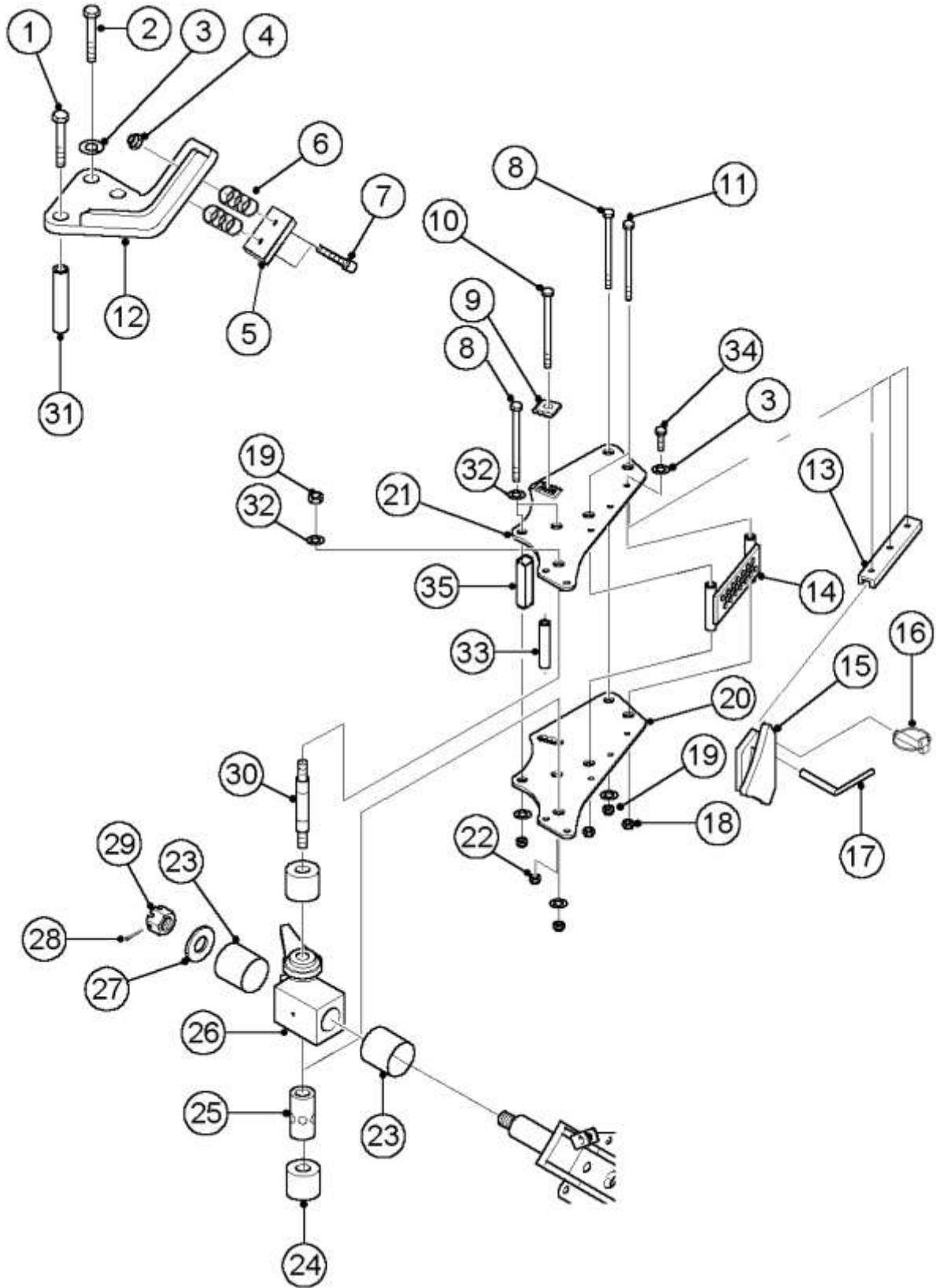




# **WHEEL DAMPER ASSEMBLY**

ITEM	PART N°	DESCRIPTION	QTY
1	900021	Setscrew 3/8" UNF x 3/8"	1
2	900306	Dowty Washer 1/4" BSP	1
3	900381	Internal Tension Bush	2
4	900225	Single Acting Seal	2
5	900247	Composite Seal	1
6	900805	Back-Up Ring	1
7	197200	Rod Eye	1
8	900377	Internal Tension Bush	1
9	900772	Circlip	1
10	198400	End Bung	1
11	900210	'O' Ring	1
12	264300	Piston Rod Assembly	1
13	198800	Cylinder Assembly	1
14	900431	Grease Nipple Straight	1
15	900154	Grub Screw 1/4" UNF x 1/4"	1
16	9004341	Grease Nipple 90°	1
-	198300	Damper Assembly	-
-	1029900	Seal Set	-

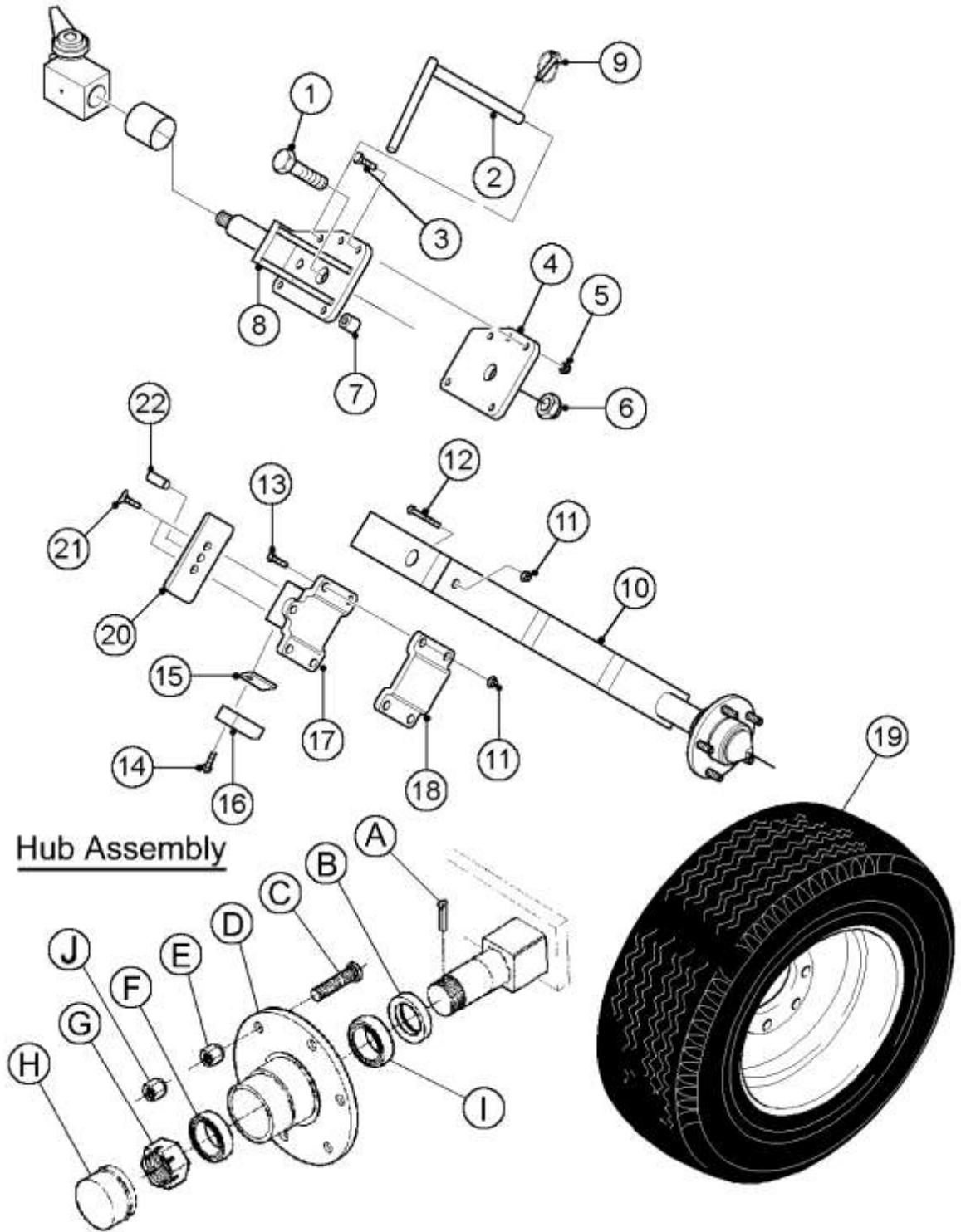
# **D/T WHEEL BRACKET OPTION**



## **D/T WHEEL BRACKET OPTION**

ITEM	PART N°	DESCRIPTION	QTY
1	901104	Bolt M16 x 280	1
2	901330	Set Screw M16 x 35	4
3	901191	Spring Washer M16	10
4	900783	Self Locking Nut M12	4
5	1588900	Bump Stop Plate	2
6	900455	Spring	4
7	901505	C'sunk Square Bolt M12 x 80	4
8	903136	Bolt M24 x 260	3
9	1022700	Serrated Width Adjuster	2
10	901125	Bolt M20 x 250	1
11	903138	Bolt M16 x 250	2
12	1489499	Wheel Bump Stop (LH)	1
-	1489498	Wheel Bump Stop (RH)	1
13	1483500	Adjuster Slide Rail	2
14	1483600	Adjuster Locator	1
15	1483300	Depth Adjuster	1
16	900527	Linch Pin	1
17	1484300	Depth Locator Pin	1
18	900784	Self Locking Nut M16	3
19	900786	Self Locking Nut M24	6
20	1541798	Wheel Mounting (RH)	1
21	1541799	Wheel Mounting (LH)	1
22	900785	Self Locking Nut M20	1
23	903151	Plain Metal Bearing	2
24	900389	Plain Metal Bearing	2
25	1484000	Wheel Swivel Spacer	1
26	1476900	Wheel Swivel	1
27	1498300	Special Washer	1
28	901917	Split Cotter Pin	1
29	901556	Hexagonal Slotted Nut M24	1
30	1483400	Wheel Swivel Pin	1
31	1489600	Bump Stop Support	1
32	901610	Plain Washer M24	8
33	1484100	Swivel Limit	1
34	901329	Set Screw M16 x 30	6
35	1556000	Adjustable Swivel Limit	1

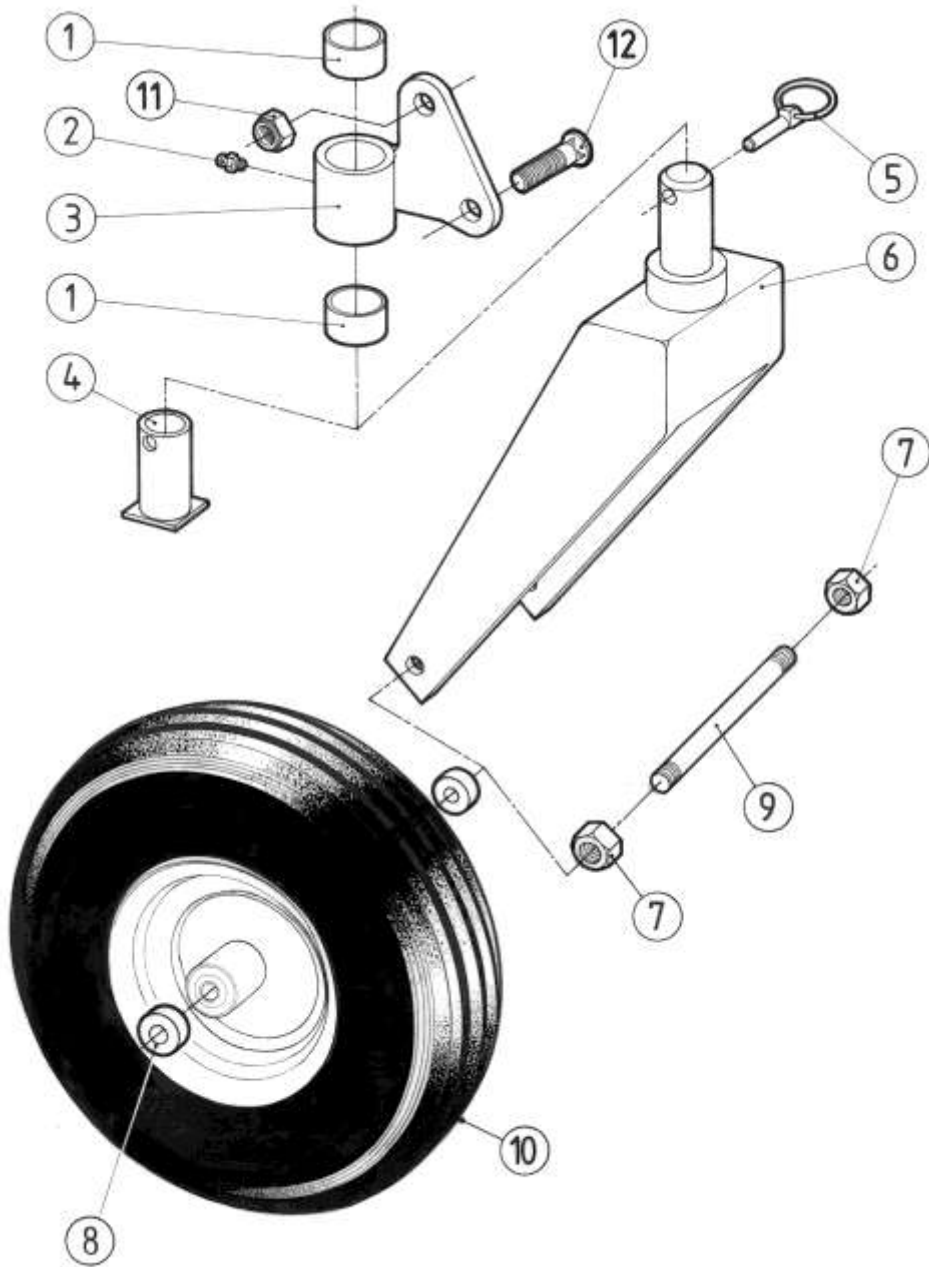
# **D/T WHEEL ARM OPTION**



## **D/T WHEEL ARM OPTION**

ITEM	PART N°	DESCRIPTION	QTY
1	901141	Bolt M24 x 90	1
2	1484200	Wheel Transport Pin	1
3	901089	Bolt M16 x 90	3
4	1484800	Wheel Arm Clevis Plate	1
5	900784	Self Locking Nut M16	3
6	900786	Self Locking Nut M24	1
7	1484900	Clevis Spacer Boss	3
8	1483200	Wheel Pivot	2
9	900528	Linch Pin	1
10	1606600	Wheel Arm	1
11	900783	Self Locking Nut M12	5
12	901070	Bolt M12 x 60	1
13	901067	Bolt M12 x 45	4
14	903453	Socket Cap Screw M10 x 35	2
15	1485600	Depth Equalizing Strip	2
16	1483700	Depth Striker	2
17	1483800	Depth Striker Mounting (Suits 10/75)	1
17a	1534100	Depth Striker Mounting (Suits 12/80 & 11.5/80)	
18	1483900	Depth Striker Clamp	1
19	1319000	Wheel Assembly 10/75 – 15.3 (Std)	1
19a	1426400	Wheel Assembly 12/80 – 15.3	-
19c	1566000	Wheel Assembly 11.5/80 – 15.3	-
20	1517900	Keep Plate (Suits 10/75)	1
20a	1518100	Keep Plate (Suits 12/80 & 11.5/80)	
21	901199	Countersunk Socket Screw M12 x 35	2
22	1520600	Dowel Pin	1
A	901214	Spit Pin	1
B	1523800	Dirt Seal	1
C	1497400	Wheel Stud M16 x 1.5	5
D	1523900	Wheel Hub	1
E	1497500	Wheel Nut M16 x 1.5	5
F	1497600	Tapered Roller Bearing (small)	1
G	1497700	Slotted Nut	1
H	1497800	Hub Cap	1
I	232100	Tapered Roller Bearing (Large)	1
J	903274	Self Locking Nut M16	5

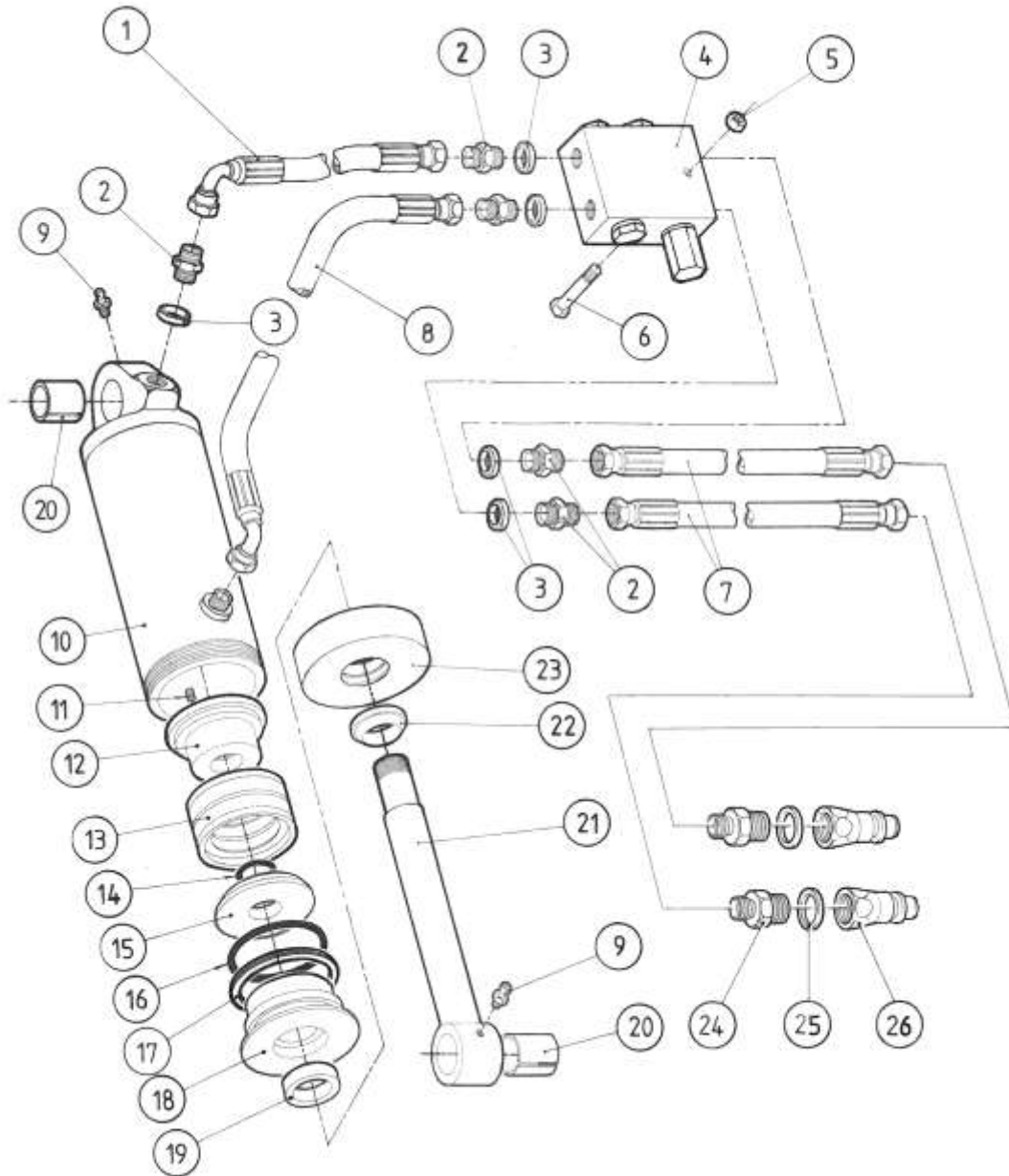
# **TRANSPORT WHEEL**



# **TRANSPORT WHEEL**

ITEM	PART N°	DESCRIPTION	QTY
1	900344	Plain Bearing	2
2	900431	Grease Nipple	1
3	1488700	Wheel Mounting Bracket	1
4	168500	Plug	1
5	900527	Linch Pin	1
6	167800	Wheel Yoke	1
7	900106	Nut 5/8" UNF	2
8	167900	Spacer	2
9	900502	Stud 5/8" UNF	1
10	062600	Wheel Assembly	1
11	900117	Self Locking Nut 3/4" UNF	4
12	900144	Bolt 3/4" UNF x 3"	4
-	900581	Wheel Hub	-
-	900561	Tyre (6 x 9)	-
-	900778	Inner Tube	-
-	072600	Felt Seal	-
-	081200	Axle Tube	-
-	900321	Bearing	-
-	081300	Spacer Tube	-

# **TURNOVER HYDRAULICS**

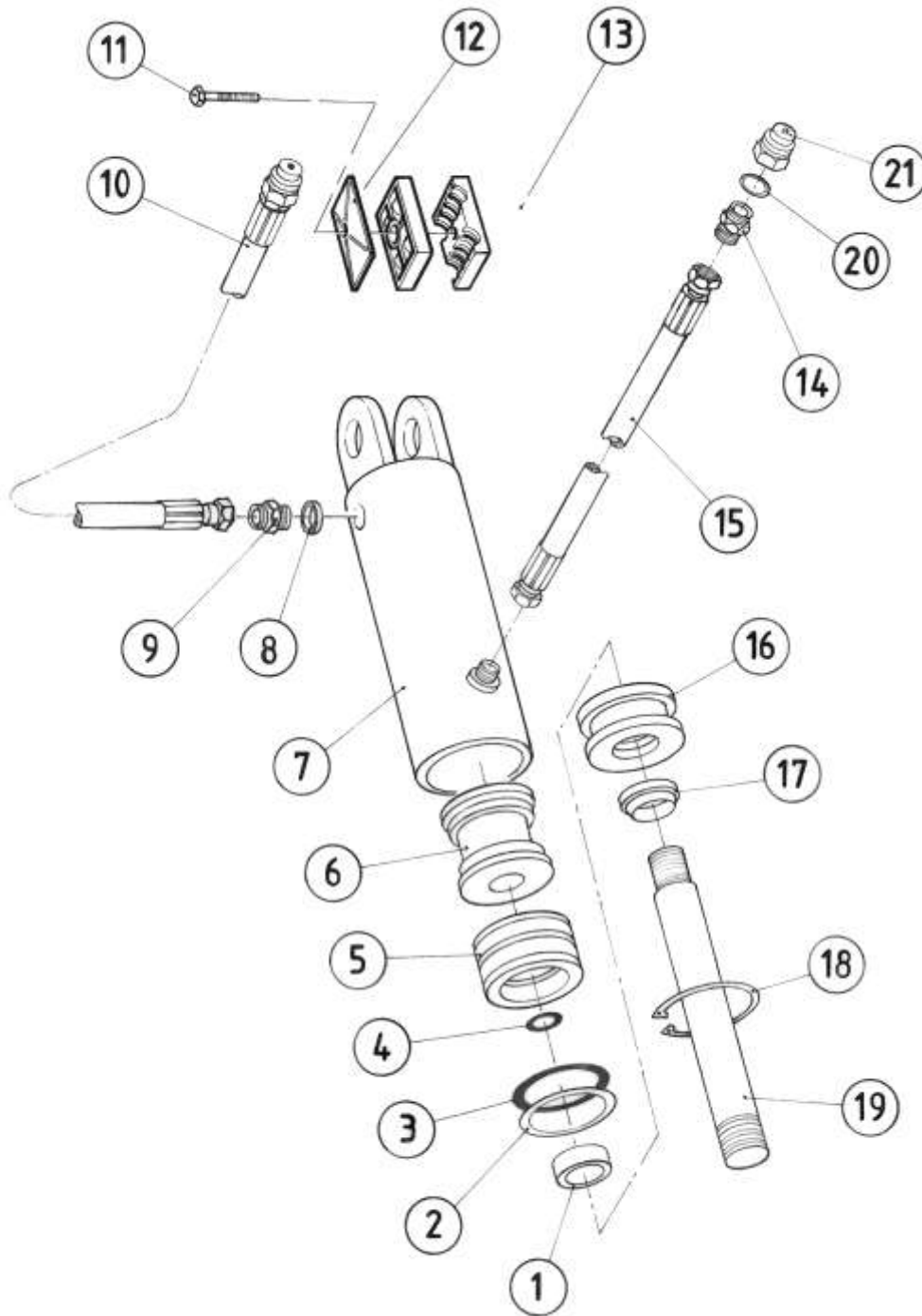




# **TURNOVER HYDRAULICS**

ITEM	PART N°	DESCRIPTION	QTY
1	1092500	Hose Assembly (23'')	1
2	900391	Hydraulic Adapter	5
3	900301	Dowty Washer	5
4	1534200	Turnover Valve (V8885)	1
5	900782	Self Locking Nut M10	1
6	901044	Bolt M10 x 75	1
7	008400	Hose Assembly (56'')	2
8	043000	Hose Assembly (23'')	1
9	900431	Grease Nipple	2
10	161800	Ram Cylinder	1
11	900151	Grubscrew 1/4" UNF x 1/8"	1
12	006300	Piston	1
13	900241	Double Acting Seal	1
14	900201	'O' Ring	1
15	006400	Piston Annulus	1
16	900203	'O' Ring	1
17	900801	Backup Ring	1
18	006500	End Plug	1
19	900221	Single Acting Seal	1
20	900373	Internal Tension Bush	2
21	018700	Piston Rod	1
22	900261	Wiper Seal	1
23	006600	End Cap	1
24	900392	Hydraulic Adapter	2
25	900302	Dowty Washer	2
26	900611	Tractor Quick Coupler – Male	2
-	161700	Ram Assembly	-
-	052500	Seal Kit	-

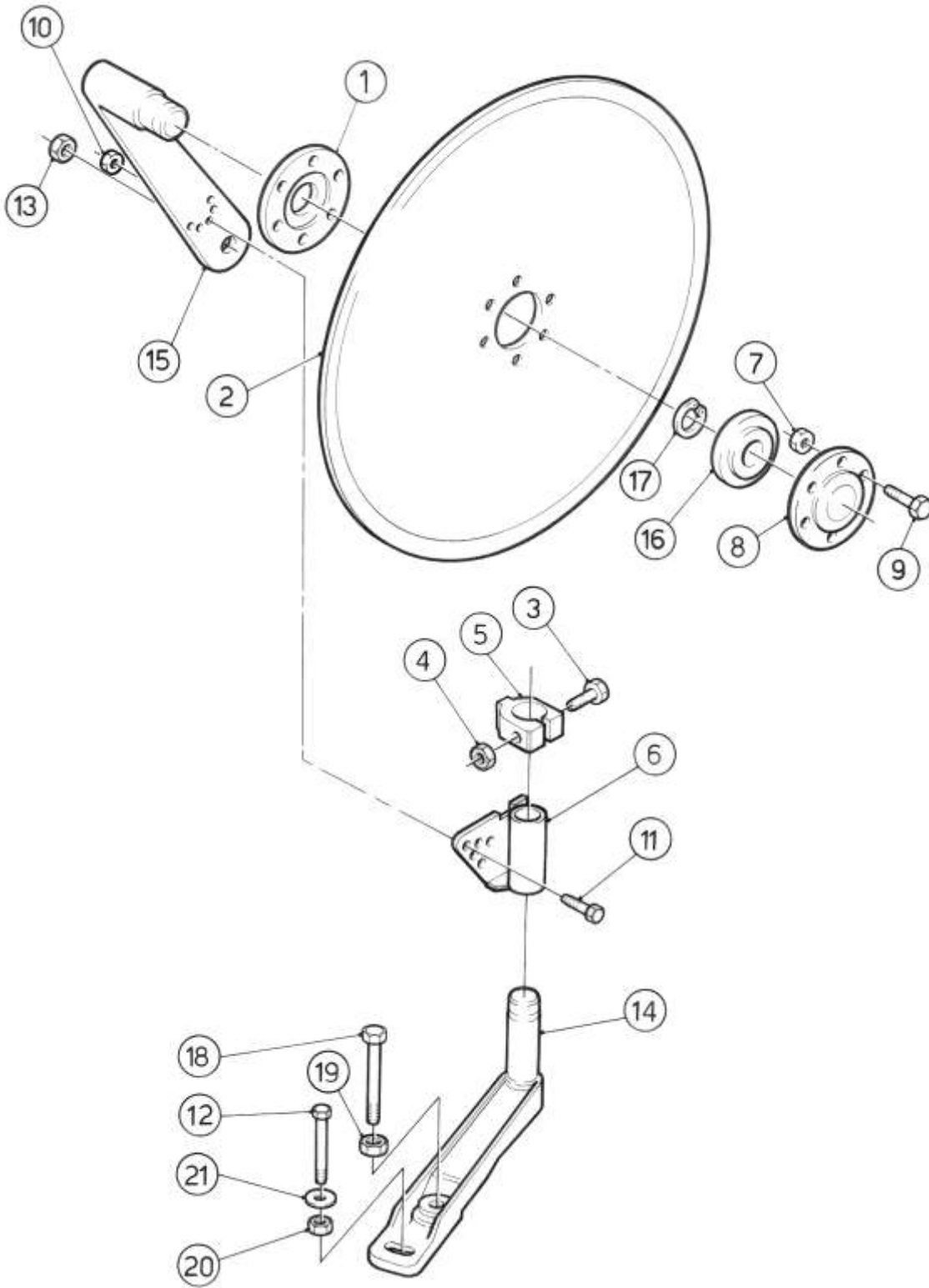
# **OFFSET HYDRAULICS**



# **OFFSET HYDRAULICS**

ITEM	PART N°	DESCRIPTION	QTY
1	900225	Single Acting Seal	1
2	900805	Back- Up Ring	1
3	900210	'O' Ring	1
4	900209	'O' Ring	1
5	900246	Double Acting Seal	1
6	148300	Piston	1
7	1091900	Cylinder Assembly	1
8	900301	Dowty Washer	1
9	900391	Hydraulic Adapter	1
10	1105000	Hose Assembly (132")	1
11	901022	Bolt M8 x 35	2
12	901826	Cover Plate	2
13	901802	Hose Clamp	4
14	900392	Hydraulic Adapter	2
15	1105000	Hose Assembly (132")	1
16	148200	End Bung	1
17	900263	Ram Wiper Seal	1
18	900722	Internal Circlip	1
19	1092100	Piston Rod	1
20	900302	Dowty Washer	2
21	900611	Tractor Quick Coupler – Male	2
-	1092000	Ram Assembly	-
-	151600	Ram Seal Kit	-

# **DISC ASSEMBLY**



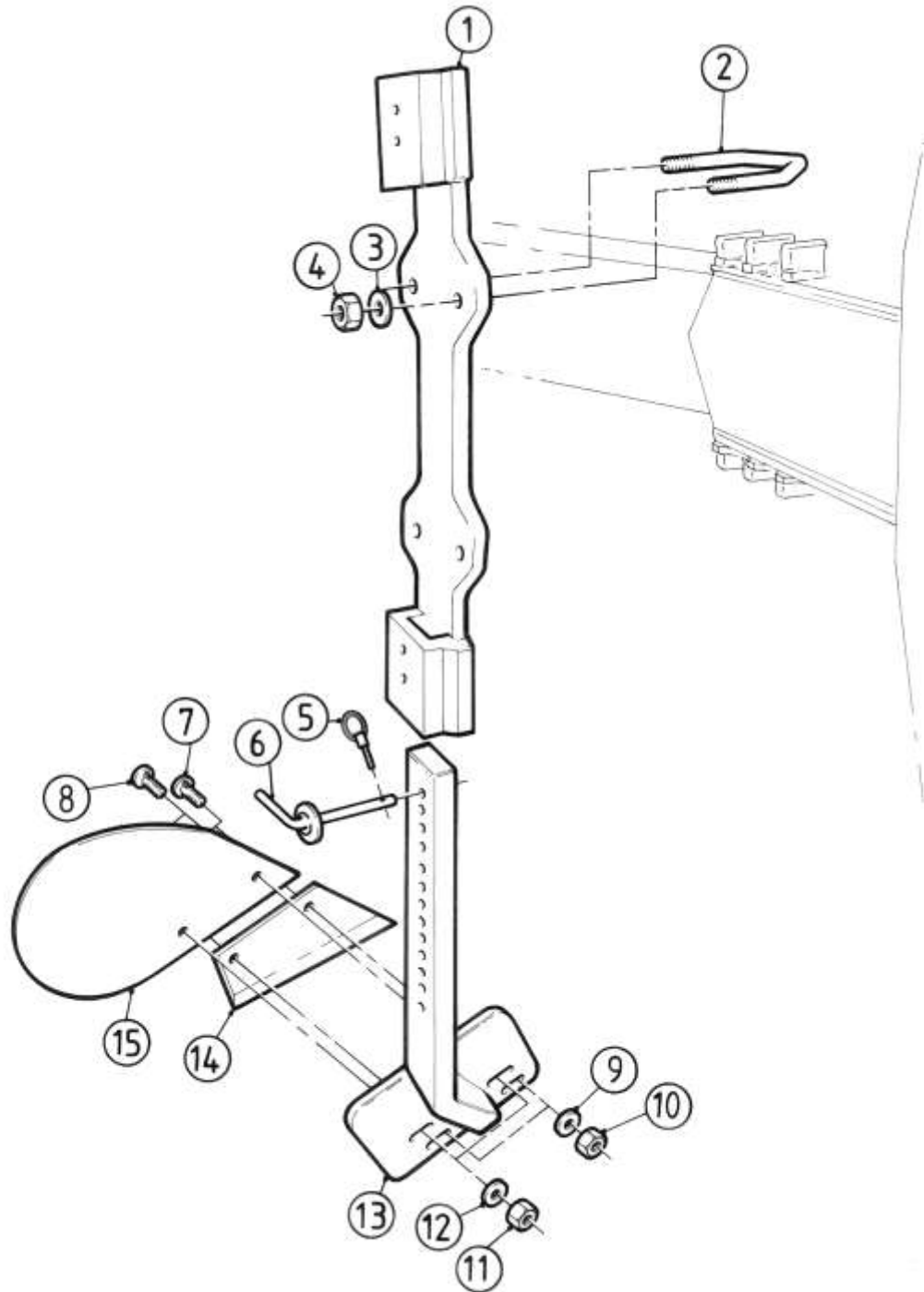
# **DISC ASSEMBLY**

ITEM	PART N°	DESCRIPTION	QTY
1	055000	Bearing Housing (Inner)	1
2	052800	Disc 18" Plain	-
-	063800	Disc 18" Cutaway	-
3	901073	Bolt M12 x 75	1
4	900783	Self Locking Nut M12	1
5	1100400	Disc Clamp	1
6	1138198	Disc Swivel (RH)	1
-	1138199	Disc Swivel (LH)	1
7	900781	Self Locking Nut M8	6
8	054900	Bearing Housing (Outer)	1
9	901263	Bolt M8 x 1 30	6
10*	900105	Plain Nut 1/2" UNF	1
11	902350	Disc Shearbolt	1
12	901099	Bolt M16 x 210	1
13	900111	Self Locking Nut 3/4" UNF	1
14	1305600	Disc Support Arm	1
15	1100200	Disc Arm (420mm overall)	1
16	900324	Disc Bearing	1
17	900601	External Circlip	1
18	902251	Bolt M20 x 225	1
19	900785	Self Locking Nut M20	1
20	900784	Self Locking Nut M16	1
21	902954	Special Washer	2

Quantities are per hand

\*supplied with FOC nut

# **RECTANGULAR SKIM ASSEMBLY**

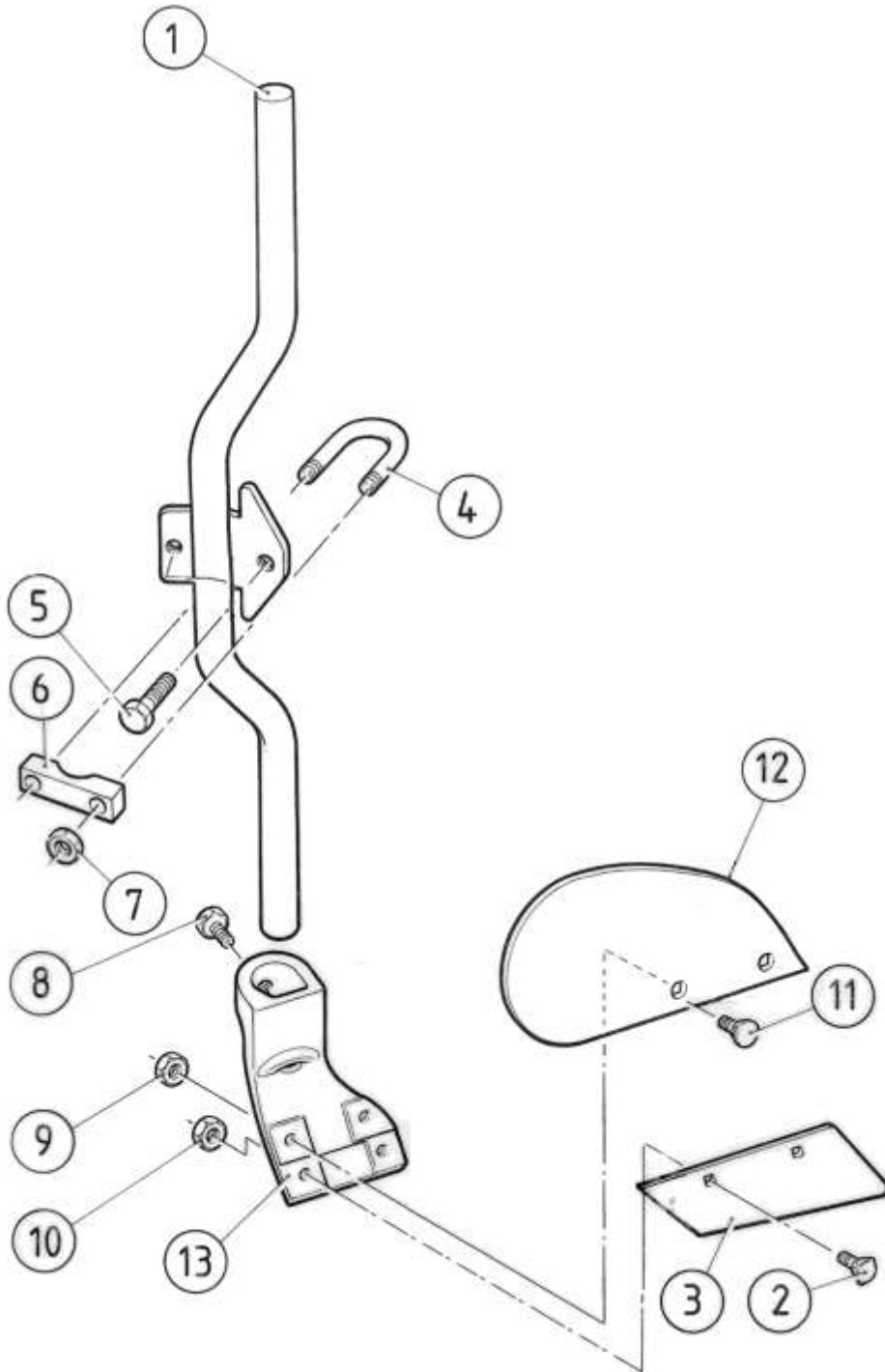


# **RECTANGULAR SKIM ASSEMBLY**

ITEM	PART N°	DESCRIPTION	QTY
1	1340600	Skim Mounting Bracket	1
2	1344000	'V' Bolt	2
3	901606	M16 Plain Washer	4
4	900496	Plain Nut 5/8" UNC	4
5	903200	Spiral Clip	2
6	1344100	Locating Pin	2
7	900810	Taper Head Bolt	4
8	900141	Countersunk Square Bolt	4
9	902955	Special Washer M10	4
10	900498	Plain Nut 3/8" UNC	4
11	900103	Plain Nut 3/8" UNF	4
12	902955	Special Washer M10	4
13	1378398	Skim Shank (RH)	1
-	1378399	Skim Shank (LH)	1
14	048098	Skim Point (RH)	1
-	048099	Skim Point (LH)	1
15	1099898	Skim Wing (RH)	1
-	1099899	Skim Wing (LH)	1

All Quantities are per furrow

# **ROUND SKIM ASSEMBLY**



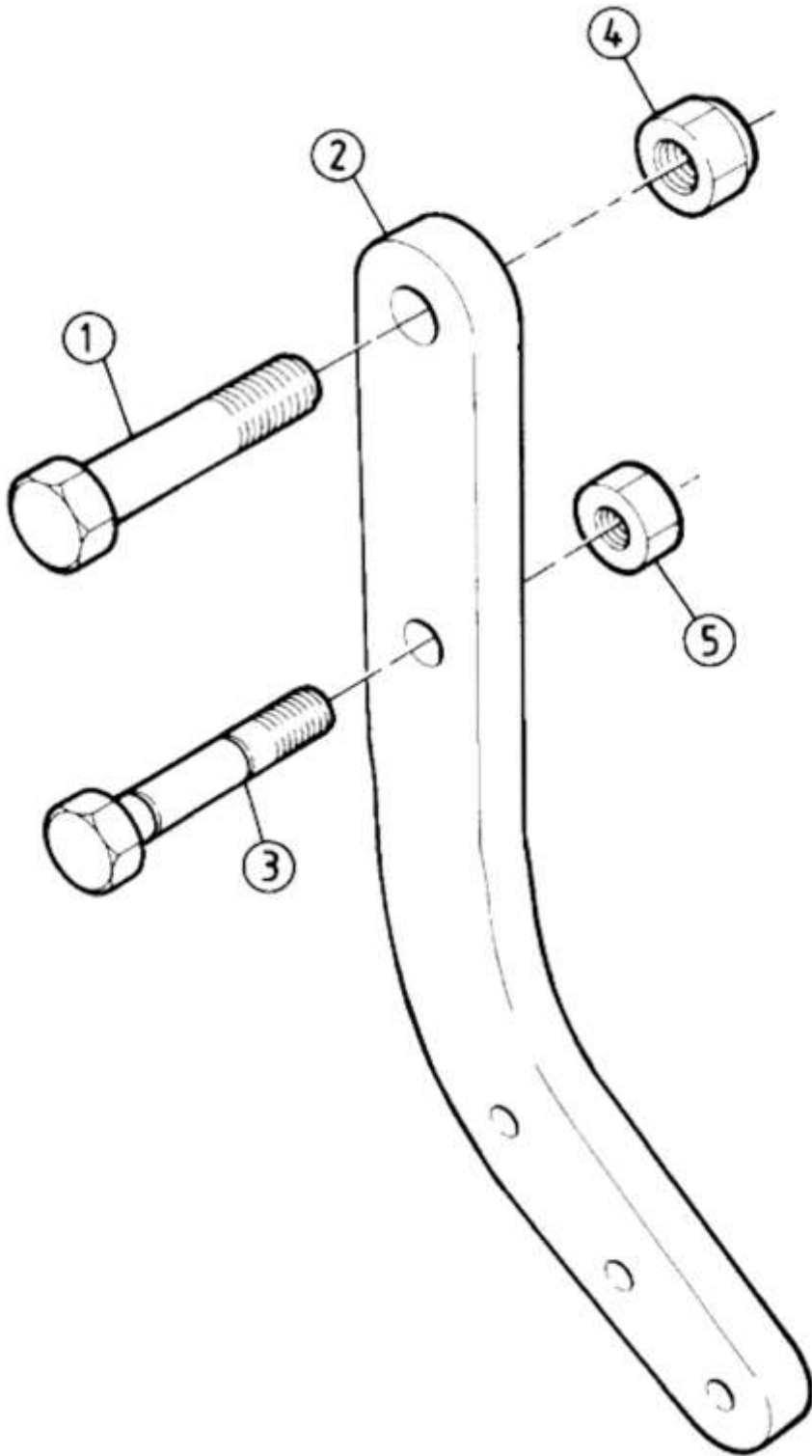


# **ROUND SKIM ASSEMBLY**

ITEM	PART N°	DESCRIPTION	QTY
1	054000	Skim Shank	1
2	900810	Taper Head Bolt	4
3	048098	Skim Point (RH)	1
-	048099	Skim Point (LH)	1
4	010700	'U' Bolt	2
5	900996	Setscrew 5/8" x 2 1/2"	2
6	010800	Clamp Block	2
7	900496	Plain Nut 5/8" UNC	4
8	062700	Lockscrew	4
9	900103	Plain Nut 3/8" UNF	4
10	900498	Plain Nut 3/8" UNC	4
11	900141	Countersunk Square Bolt	4
12	1099898	Skim Wing (RH)	1
-	1099899	Skim Wing (LH)	1
13	131398	Skim Frog 'K' Type (RH)	1
-	131399	Skim Frog 'K' Type (LH)	1
-	048298	Skim Frog 'J' Type (RH)	-
-	048299	Skim Frog 'J' Type (LH)	-

All Quantities are per furrow

# **100 SERIES LEG**



# **100 SERIES LEG**

ITEM	PART N°	DESCRIPTION	QTY
1	900052	Bolt 3/4" UNF x 2 3/4"	1
2	-	See Table Below	As Req
3	-	Shearbolt (See Separate Page)	-
4	900107	Plain Nut 3/4" UNF	1
5	900496	Plain Nut 5/8" UNC	1

## **LEG LIST**

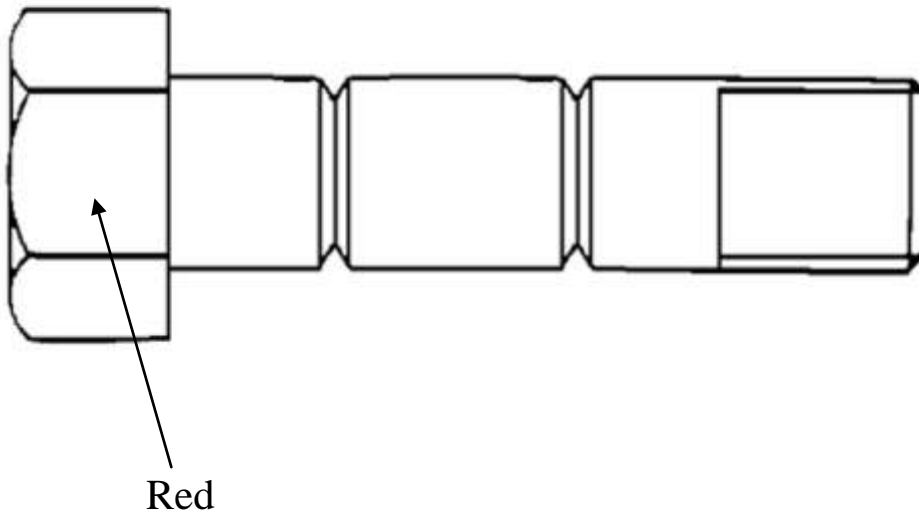
Underbeam Clearance (Inches)	Body Type	Part N°
28.5"	DD / DDS	146398
28"	UCN / SCN	146398
27"	M-SLAT	177200
28"	YCN	315300

# **100 SERIES LEG SHEARBOLT**

To avoid SERIOUS DAMAGE it is essential that the correct shear bolts are fitted and fitted with the bolt head against the leg.

THE USE OF INCORRECT SHEARBOLTS WILL NULLIFY YOUR WARRANTY!

To ease identification, all leg shearbolts are colour coded.



Part Number – 900486

Supplied with nut inclusive as spare.